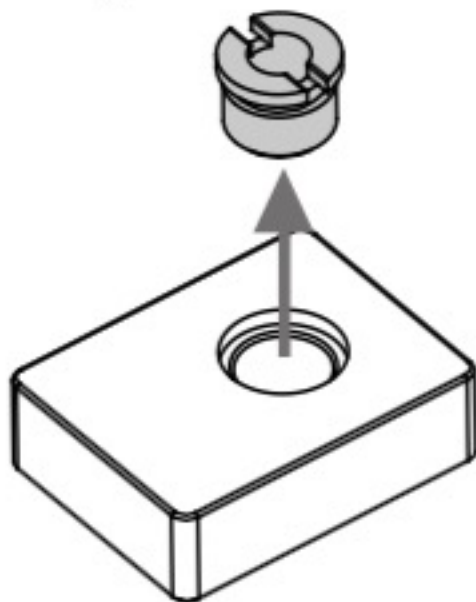


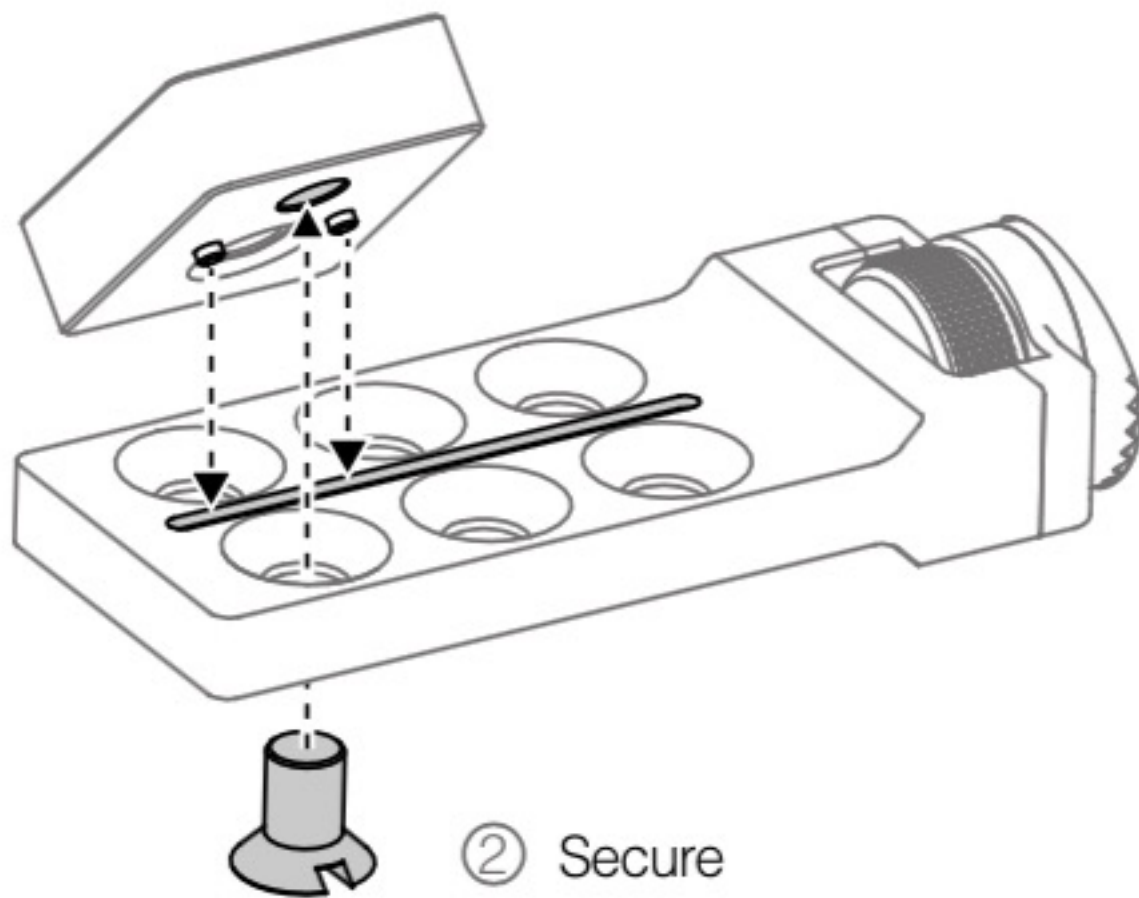
Installation

1. If you want to attach an accessory with a 3/8" thread, remove the screw in the mounting hole.



2. Attach the Mounting Adapter to the Universal Mount. Align the studs with the narrow slot, and then secure the Mounting Adapter with the 1/4" screw on the Universal Mount.

① Attach



② Secure

3. Check that the Mounting Adapter is secure before attaching your accessory.

